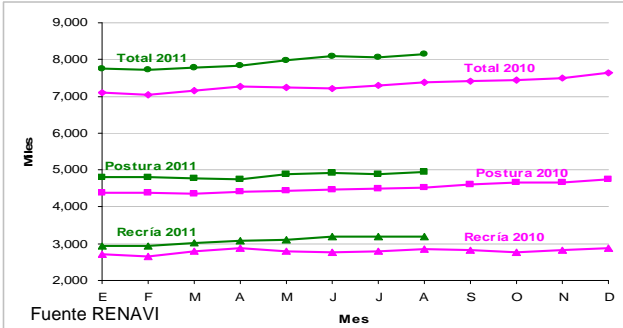
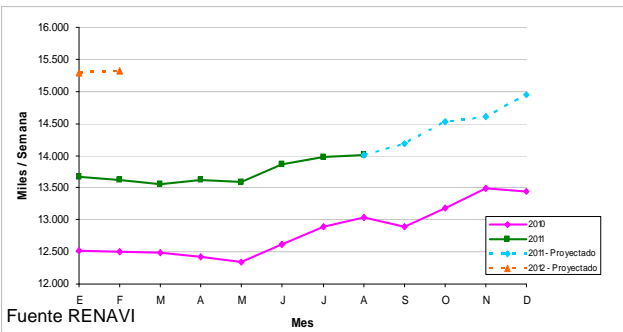


EXISTENCIAS DE REPRODUCTORAS PESADAS 2010 - 2011



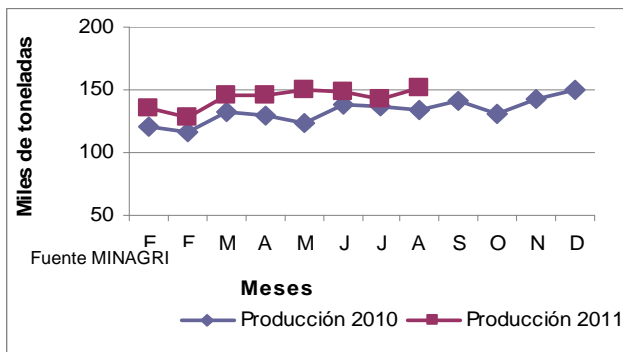
MES	RECRIA (en miles)			POSTURA (en miles)			TOTAL (en miles)		
	2010	2011	% 11/10	2010	2011	% 11/10	2010	2011	% 11/10
E	2,697	2,935	8.8	4,393	4,809	9.5	7,090	7,744	9.2
F	2,652	2,941	10.9	4,382	4,796	9.4	7,034	7,737	10.0
M	2,801	3,011	7.5	4,347	4,767	9.7	7,148	7,778	8.8
A	2,871	3,086	7.5	4,409	4,743	7.6	7,280	7,829	7.5
M	2,801	3,099	10.6	4,446	4,880	9.8	7,248	7,979	10.1
J	2,761	3,190	15.5	4,466	4,911	10.0	7,227	8,101	12.1
J	2,802	3,199	14.2	4,499	4,878	8.4	7,301	8,077	10.6
A	2,855	3,195	11.9	4,522	4,956	9.6	7,378	8,151	10.5
S	2,813			4,602			7,415		
O	2,769			4,668			7,437		
N	2,817			4,675			7,492		
D	2,875			4,761			7,637		

PRODUCCION DE POLLITOS BB PARRILLEROS 2010-2011-2012
Miles/semana



MES	BB (cant. promedio semanal en miles)				
	2010	2011	% 11/10	2012	% 12/11
E	12,518	13,668	9.2	15,282	11.8
F	12,505	13,613	8.9	15,324	12.6
M	12,486	13,560	8.6		
A	12,416	13,613	9.6		
M	12,342	13,594	10.1		
J	12,612	13,856	9.9		
J	12,892	13,970	8.4		
A	13,029	14,009	7.5		
S	12,893	14,191	10.1		
O	13,183	14,534	10.2		
N	13,485	14,607	8.3		
D	13,446	14,947	11.2		

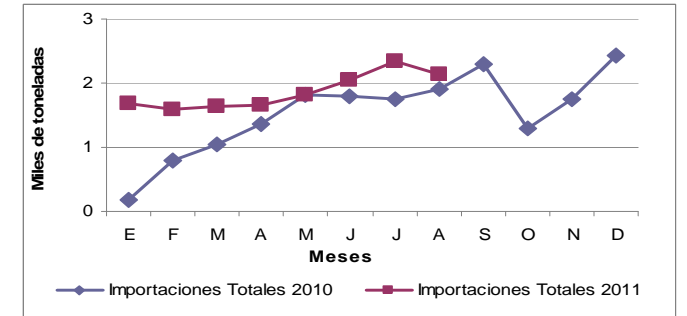
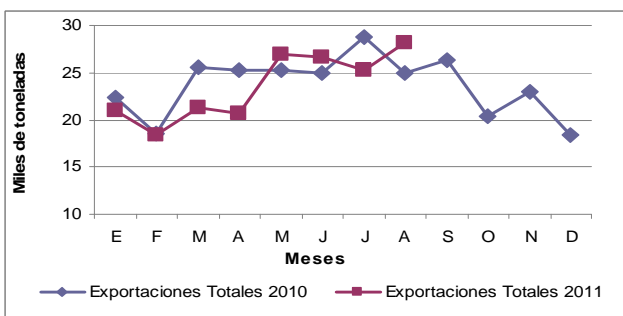
PRODUCCIÓN DE CARNE AVIAR



FAENA DE AVES

AÑO MES	2010	2011	Dif 2011/10	
	miles de cabezas			%
E	47.871	52.767	10	
F	46.641	50.700	9	
M	52.656	56.094	7	
A	50.175	54.934	9	
M	47.198	56.742	20	
J	51.940	57.005	10	
J	52.049	54.723	5	
A	51.330	57.932	13	
S	53.573			
O	49.696			
N	54.540			
D	58.030			
Subt. Ene - Ago	399.860	440.897	10	
Total	615.699	440.897		

EXPORTACIONES / IMPORTACIONES DE CARNE AVIAR Y SUBPRODUCTOS



Fuente MINAGRI con datos SENASA

Fuente MINAGRI con datos SENASA